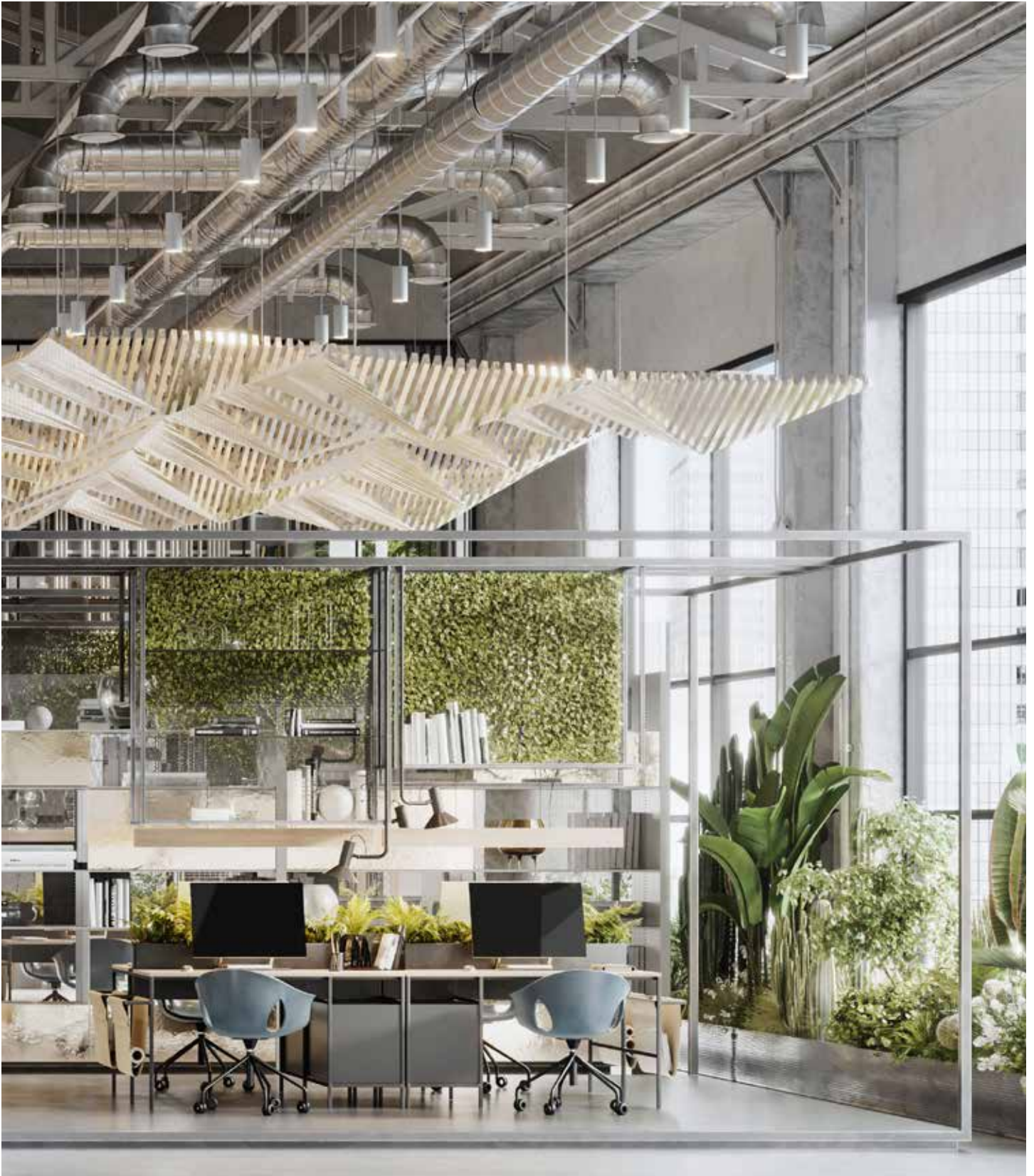


USAI® Lighting



 Color Select® Tunable White



CONTENTS

- 03**
Nature Inspires Innovation
- 05**
Why Choose
Color Select Tunable White?
- 07**
The Right Light
at the Right Time
- 09**
Balancing Lighting
Day to Night
- 11**
Color Select for Your Project
- 13**
Controls and Dimming
- 15**
Color Select Stories
- 29**
Light Scenes with
Color Select Tunable White
- 31**
FAQs: Color Select +
Circadian Lighting
- 33**
Guide to USAI LED
Color Choices



EMPOWER WITH TUNABLE WHITE LIGHT

High quality lighting with adjustable color temperature and intensity has the power to enhance architecture, elevate aesthetics, and increase the energy efficiency of a space. But most importantly, lighting can improve the quality of life of the human beings who use it.



Nature Inspires Innovation.

Natural light presents many hues of white light with varying intensities. Think of the sun as it rises with warmth in the morning, brightens with crisp, clear blue skies as it approaches mid-day, and slowly transitions through the afternoon to a dusky, evening sunset.

Inspired by nature, USAI became the trailblazers who innovated **Color Select Tunable White Light**. As a result, new possibilities and tools that were never before available were introduced by USAI.

Today, **Color Select Tunable White Light** provides high quality lighting with adjustable color temperatures from 6000K down to 2200K, while independently adjusting intensities from 100% to 0.1% to mimic natural daylight. USAI Lighting's advancements in LED Technology allows occupants to live healthier, more optimized and productive lifestyles that are as dynamic and flexible as their lives.



WHITE LIGHT IS NOT JUST ONE HUE

Why Choose Color Select Tunable White?

COLOR SELECT OFFERS

- The widest range of tunable white light color temperatures available, from a candlelight-like 2200K to a bright daylight-like 6000K.
- Balance artificial and natural light through the day with the ability to change color temperature from cool light at full intensity in the morning, to low light levels in the evening.
- Ability to program tunable white light to follow the natural light cycle and help improve sleep and health.
- Tailor lighting to daily activities addressing light that will help focus or relax.
- Enhance interiors and art with warm/cool color temperatures making materials and finishes look their best any time of the day.
- Choose from a dynamic offering of USAI downlight options.
- Compatible with all industry standard architectural lighting controls.

Light is equally as precious as the materials and finishes selected for a home. Choose color temperatures to make the details pop and look their best.



^
Vivid & Vibrant.
Cool 3600K - 6000K delivers deep reds, crisp whites, icy greys, and cool woods



^
Soft & Warm.
Golden 2200K-3500K delivers fire engine reds, creamy whites, beige greys and warm woods

The Right Light at the Right Time

There is more to light than meets the eye — a lot more, in fact. While light enables us to see our world in vivid color and stunning detail, we have also learned that we have evolved with the sun guiding our ‘internal clock’ also known as circadian rhythms.






Our circadian rhythms regulate our sleep-wake cycle, appetite, mood and overall health and well-being. The amount of light, duration of exposure, timing and color of light are all important factors – impacting how well we sleep at night. We know that the right light at the right time can help you get a great night’s rest, resulting in increased healing, improved moods, sharpened focus, and much more.

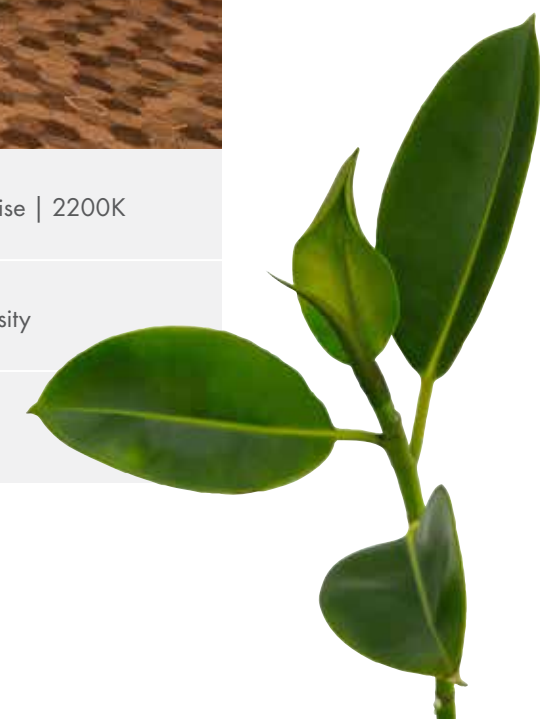
According to research scientist and director of the Mount Sinai Center for Light and Health Research, Dr. Mariana Figueiro, the right light exposure during specific times of the day is equally as important as daily exercise. This timed exposure and the manipulation of wavelengths (red vs. blue light) and intensity alters our body’s melatonin production and can hinder or improve our sleep patterns and ultimately, our mood levels.

As good health becomes an imperative for so many today, incorporating Color Select Tunable White Light and its ability to create a daylight cycle from a candlelight-like 2200K to a 6000K is increasing in demand for a diverse range of projects.

See image on right for color temperatures, dimming intensities and voltage.



Color Select Scene >	 Daylight 6000K	 Mid-afternoon 4200K	 Dusk 3500K	 Sunset 2700K	 Early Sunrise 2200K
Dimming Channel Setting >	100% Intensity	80% Intensity	60% Intensity	40% Intensity	25% Intensity
Color Channel Setting (0-10V) >	9V	6V	4V	2V	1V



Balancing Light

Discover the Right Light Day to Night

Light exists on a spectrum of warm to cool tones that are measured by their **Correlated Color Temperature (CCT)** which is measured in degrees Kelvin (K).

Every space, object, or task has an ideal shade of light to be lit by depending on the activity, atmosphere desired, and the time of day.

As our spaces travel through the course of the day, the appearance of interiors, finishes and occupants are influenced by the color and quality created by the blending of artificial and natural light.

Adjusting the color temperature and intensity of artificial light as the day evolves provides the ability to choose the right light setting at every moment with Color Select.

Warm White - Up to 3000K

Neutral White - 3000K to 4000K

Cool White - 4000K - 5000K

Daylight - 5000K - and higher

Warmer color temperatures add warmth and enrich colors with depth, bringing intimacy and sophistication to a space. Cooler color temperatures brighten and make rooms feel more spacious.

Images on the right illustrate the dramatic differences of how a room appears with varying color temperatures during the day and night.



2700K Day



2700K Night



3000K Day



3000K Night



3500K Day



3500K Night



4000K Day



4000K Night



Color Select for Your Project

A Solution for Every Space. Color Select is available with a variety of products within the USAI Lighting platform, ranging in recessed light apertures from 3" - 6", to various surface mount products, as well PoE and Title 24 options. All are compatible with most popular control systems and wall switches for both new and existing models.

RECESSED

SURFACE MOUNTS

SOLUTIONS FOR EVERY DESIGN CHALLENGE

INTEGRATED ARMSTRONG CEILING SOLUTIONS®



BeveLED Mini® Complete - 3"



BeveLED Mini® Title 24 Compliant - 3"



True03™ - 3"



TrueZero360™ - 3"



True04™ - 4"



BeveLED® 2.2 Complete - 4.5"



BeveLED® 5.0 - 6"



BeveLED Mini® Cylinder - 3.5"



BeveLED® 2.2 Cylinder - 6"



Incline® for Sloped Ceilings
BeveLED Mini® - 3"
and BeveLED® 2.2 - 4.5"



BeveLED® 2.2 Glow



PoE Products - Various



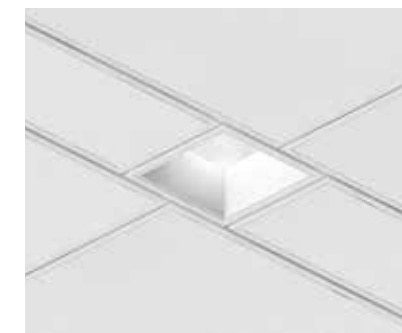
BeveLED for WoodWorks®
Ceiling Systems



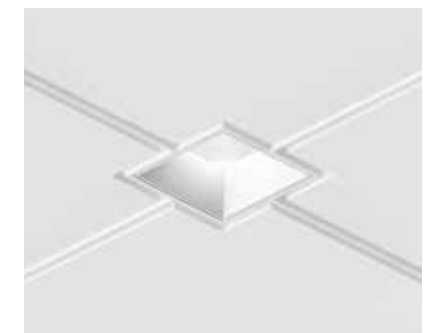
BeveLED for Trimless Acoustical



BeveLED for MetalWorks™
Ceiling Systems



USAI for TechZone®
Ceiling Systems

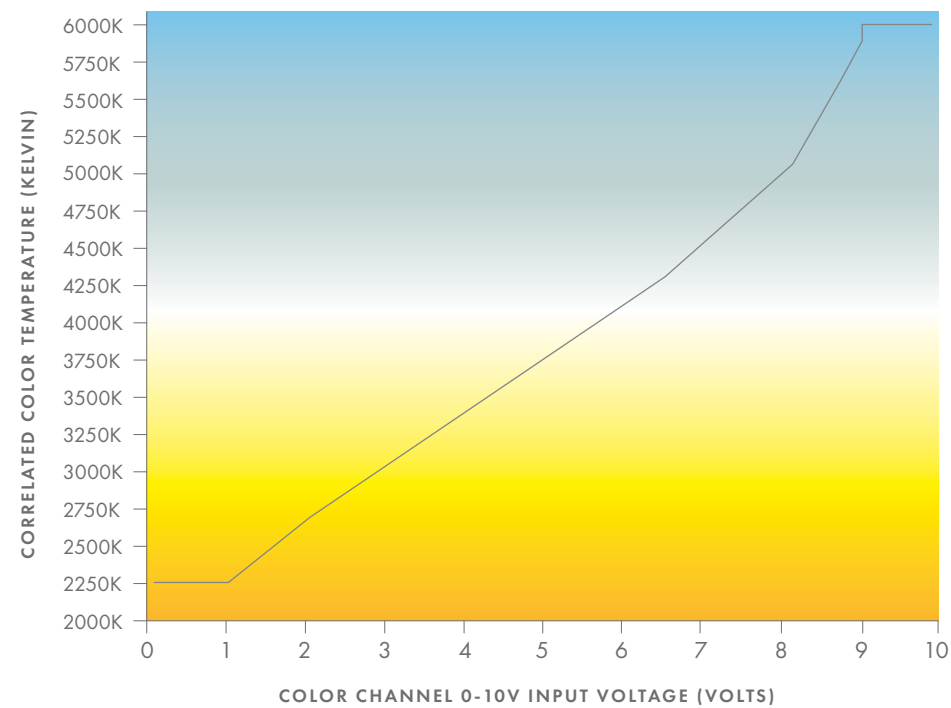


Connect™ for Intersection
Downlighting



Controls and Dimming

USAI Color Select Color Temperature Control



Color Select paired with popular control systems creates a seamless and healthy experience for the end-user.

By independently adjusting light levels and color temperatures, the full dynamic range of natural daylight can be recreated in an interior space. If the building control system uses an astronomical time clock, Color Select can be commissioned to change color temperature and light level automatically, allowing for the reproduction of outdoor lighting conditions in a windowless indoor space.

Simplicity, Flexibility, Compatibility



Controls required to take advantage of the full functionality of Color Select Tunable White are simple.

All that needs to be provided is a dimming control of your choice for intensity – whether it be 0-10V dimming controls, DALI, DMX, EcoSystem, or phase dimming – and a separate set of 0-10V dimming controls for the color tuning channel. That's it. And unlike our competition, USAI's entire Color Select product line has been specifically designed to be compatible with all standard architectural dimming controls, which means that industry-leading tunable white performance can be available at your fingertips without limiting the interfaces you have to choose from.



Color Select Stories

Since its innovation, **Color Select Tunable White Light** has offered the tools for specifiers to better serve their clients with increased flexibility, tailored experiences, and healthier environments expressed uniquely with each new project.

The following pages are a selection of applications illustrating just a few of the many possibilities.



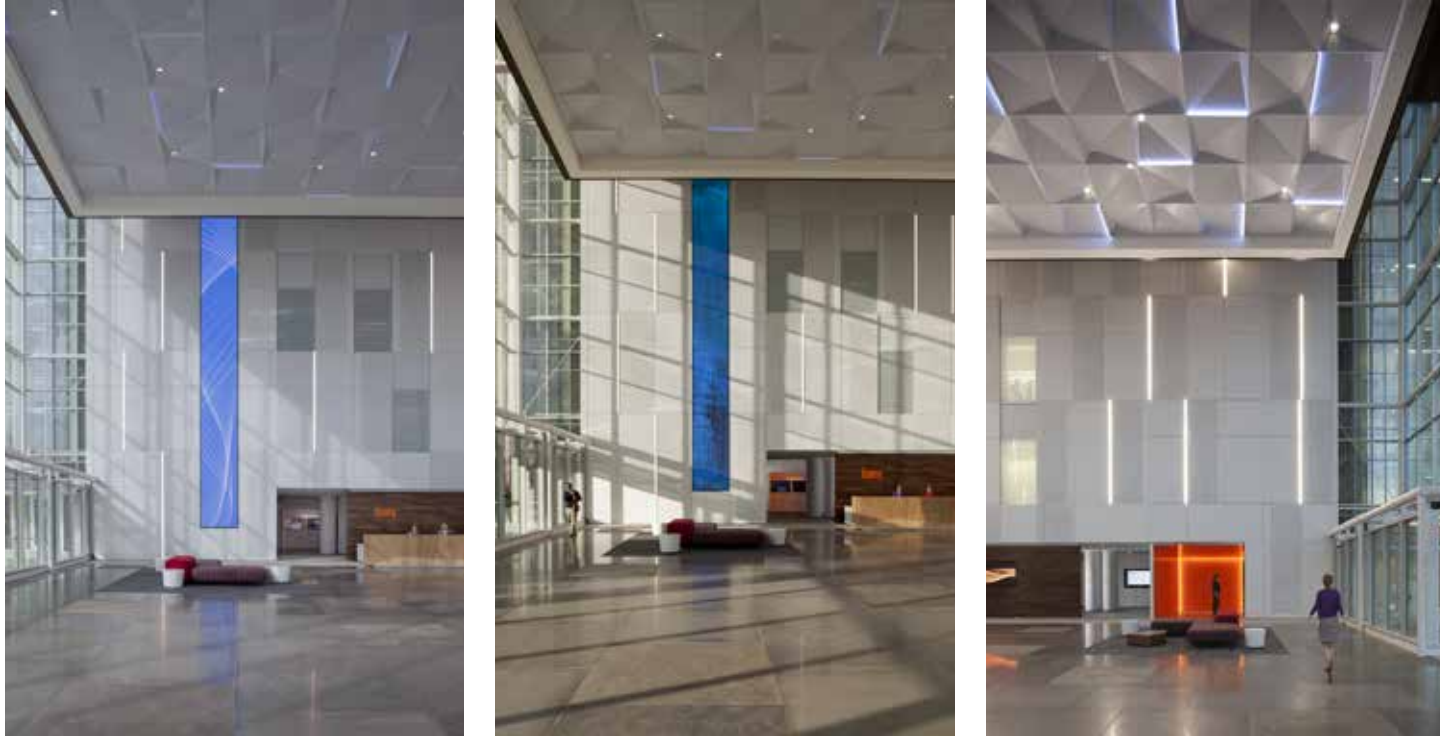
BeveLED Mini. Project: One Five One, Lighting Design: Loop Lighting, Architect: STUDIOS Architecture, Photograph: @Jeremy Frechette

A Light Cycle To Enhance The Workday

Using **Color Select Tunable White** LED Light Technology and its ability to mimic the sun's natural light, Loop Lighting designed personalized light scenes with varying color temperatures and intensities to allow the space to visually evolve and evoke emotional responses aligned with daily events occurring throughout the food hall, and coffee/wine bar - morning to evening. Layered in with dynamic lighting accents, an inviting space was created that changes every time you enter through the course of the day yet illuminating a consistent daily light cycle to provide familiarity.



LEARN MORE
Read One Five
One's Case Study.



BeveLED. Project: FISERV, Lighting Designer: Gabler – Youngston, Architect: TVS Design, Photograph: Chris Little Photography

Lighting for Personalized and Flexible Corporate Spaces

First impressions are powerful. The atrium entrance became a prominent part of Fiserv's headquarters in Atlanta, GA. The intent was to have a space that encapsulated the brand and could shift with time to impress its clients and guests as a premier, innovative leader in financial technology. Color Select's ability to independently control color and intensity provided the flexibility to create a space that welcomes guests as they arrive with lighting that matches the outdoor daily light cycle. The atrium serves as a place for large meetings during the day with a bright, crisp setting, and winds down for cocktail parties and receptions in the evening with warm lighting.



LEARN MORE
Read Fiserv's
Case Study.





BeveLED Mini Cylinder.

Biophilic Elements. Bringing the Outdoors Inside.

Use Color Select Tunable White to design a thriving workplace. Windowless spaces become the new coveted areas to work in. Bring the look and feel of calming nature into the office with a daily light cycle mixed with biophilic design elements.



BeveLED. Project: UK Kentucky Children's Hospital,
Architect: HGA, Photograph: Halkin Mason Photography



BeveLED. Project: Children's Hospital of Philadelphia,
Architect: ZGF Architects, Photograph: Halkin Mason
Photography



BeveLED. Project: Cassia Trinity Springs (Senior Living),
Architect: Pope Architects, Photograph: Gilbertson
Photography

Light That Helps Improve Health

Color Select Tunable Light is often used in medical and senior living facilities to help improve health and well-being.

UK Kentucky Children's Hospital's Neonatal Intensive Care Unit (NICU)

Color Select Tunable White placed in all patient rooms to help infants improve weight gain, growth and oxygen saturations, as well as reduce crying and fussing.

Children's Hospital of Philadelphia's Behavioral Health Unit.

ZGF Architects' lighting design team used Color Select to create a specialized lighting system for all patient, staff and corridor areas within the Medical Behavioral Health Unit to support circadian rhythms and help keep patients calm.

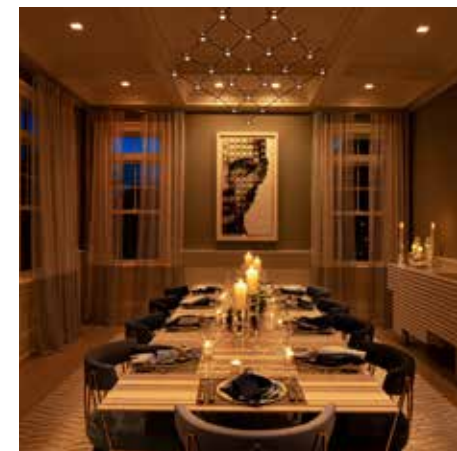
Senior Living Facilities.

Aging can result in deterioration in eyesight, balance and sleep. Implementing lighting that mimics the natural light cycle can help improve these conditions. Often living environments for the elderly will choose Color Select Tunable White to provide cool bright color temperatures for daytime activities and warm dim color temperatures for evening hours in common spaces where residents spend the most time.





BeveLED Mini. Project: Hamptons Home, Interior Design: KA Design Group, Photographs: Greg Barrett



BeveLED Mini Complete. Project: Ocean 44, Lighting Design: Akali Lighting Design, Architect: Nelsen Partners Architects + Planners, Photograph: Courtesy of Ocean 44

Light for an Elevated Dining Experience

Hamptons Home

Lighting is used in the dining room to define a sophisticated space and create different atmospheres from day to night.

Ocean 44

Scottsdale, Arizona's most sought after seafood restaurant elevates exquisite service with curated tunable white light. Creating a vibrant, curated atmosphere that ranges from dramatic to intimate to functional. Lighting mindfully matches the intention of each space as it evolves through the day.

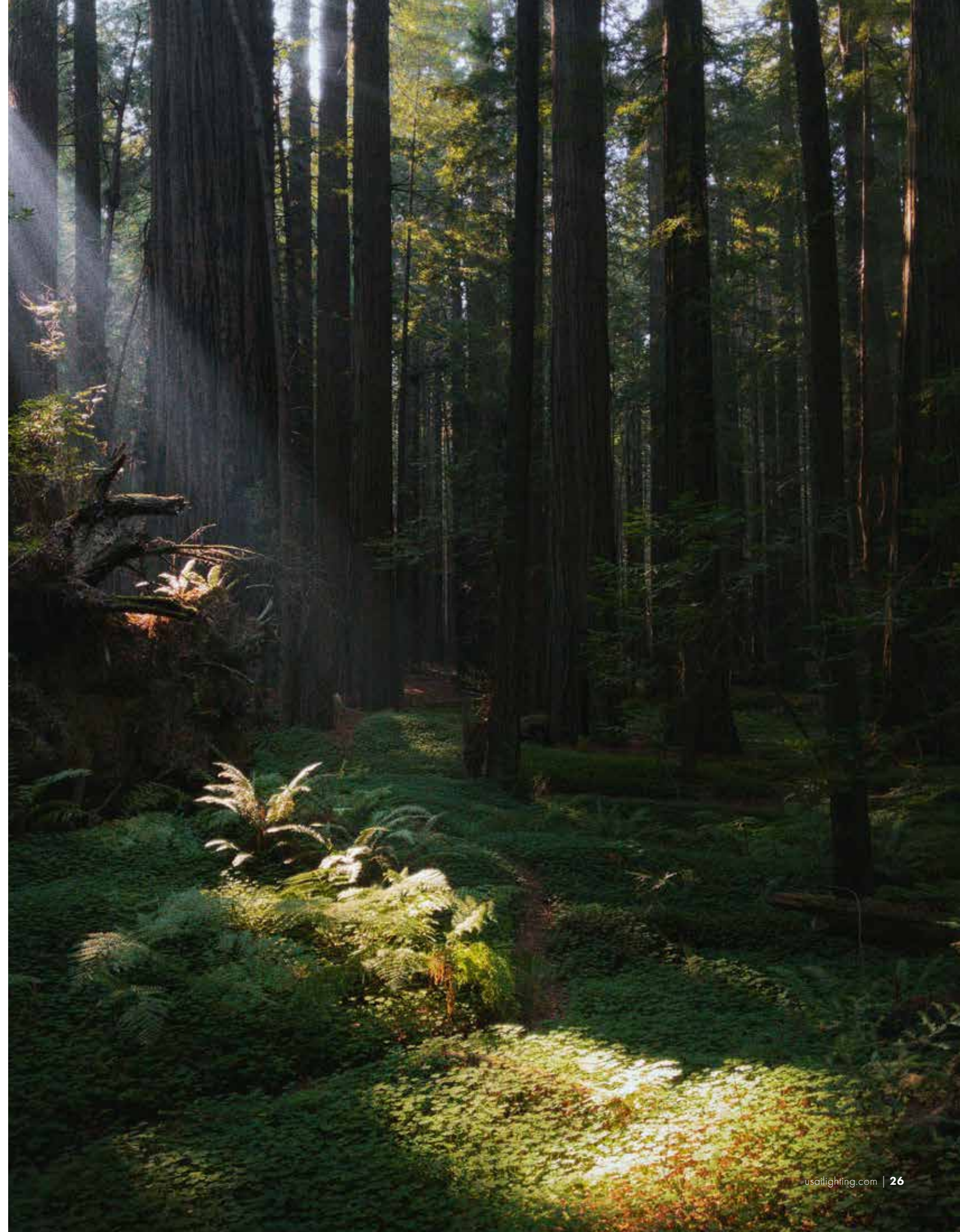
- Cool lighting to showcase seafood at its best
- Warm ambiance lighting for an inviting, evening dining experience
- Task lighting for cleaning when restaurant is closed

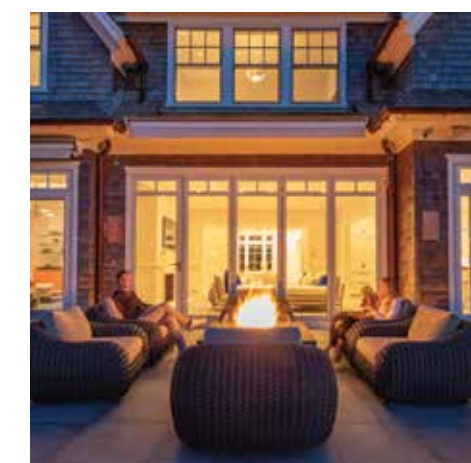
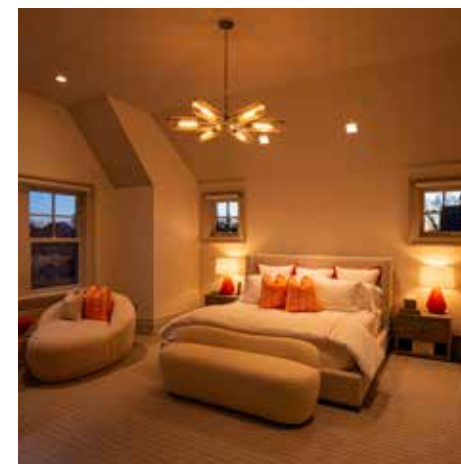


BeveLED. Project: Christies West, Lighting Designer: E. Pierce with Renfro Design Group, Architect: Selldorf Architects, Photograph: Jonathan Chesley. Courtesy of Selldorf Architects

Flexible Lighting To Align With Creative Concepts.

Christie's auction house used Color Select to tune their art galleries at their Rockefeller Center location in NYC with LED lights to match the time of day and environment in which the piece was created in - uniquely allowing the viewer to experience the colors and details as the artist did.





BeveLED Mini. Project: Hamptons Home, Interior Design: KA Design Group, Photographs: Greg Barrett

Lighting that Optimizes the Home Experience

Dynamic lighting in the home allows interior spaces to look however we desire – even on a cloudy day. Interiors move into a bright, crisp blue sky that helps keep us focused and alert, and then gradually soften into an evening sunset as we settle into a relaxing night, signaling our bodies to prepare for a restful sleep.

Make materials and finishes look their best. Whether for the home or commercial spaces, light is equally precious as the materials and finishes chosen for a space. Light with cooler temperatures (4000K) to bring out vibrancy. Use warmer color temperatures (2200K) for dramatic warmth.

Light Scenes

with Color Select Tunable White

At USAI Lighting, we believe that light should be as personal and dynamic as your life. USAI's Color Select Tunable White can provide prepared lighting scenes that enable you to choose the right light, at the right time, for any occasion. Lighting inspired by beautiful days outside to enhance everyday living. From morning sunrise to a relaxing evening and every minute in-between, you'll find the perfect light for every moment of your day with these expertly designed scenes. The right light can influence our emotions, energy levels and wellbeing. Once you've picked the settings that are right for you, easily deploy them with any standard architectural dimming controls system, through either a preset static scene or a dynamically changing show.

Scenes for Natural Light



USAI Sunrise

2400K

45% Dimming Intensity

A soft morning glow as the sun rises. A gentle setting that's perfect for waking up or an afternoon nap.



USAI Warm Day

2800K

75% Dimming Intensity

Indulge in the soft golden warmth of rose gold hues. A beautiful setting for the day.



USAI Sunlight

4500K

80% Dimming Intensity

Invigorate spaces with a bright, clean, energetic feeling of a daylight space.



USAI Blue Sky

5500K

85% Dimming Intensity

Bright blue skies on a clear day. This cool white setting provides stimulating light and sharp visual acuity.

Scenes for Relaxation



USAI Relaxation

2800K

50% Dimming Intensity

Familiar, tranquil lighting for end of day activities and conversations.



USAI Media

2400K

30% Dimming Intensity

Low level light for comfortable television viewing and home theater settings.



USAI Reading

3200K

70% Dimming Intensity

Settle in with a good book. This neutral white shade with mid range light levels helps make reading the fine print easy on the eyes.



USAI Good Night

2200K

1% Dimming Intensity

Drift off to deep sleep with this nightlight setting, which gives enough light for midnight wanderings yet doesn't interrupt your sleep schedule.

Scenes for Energizing



USAI Caffeine

6000K

90% Dimming Intensity

Get an extra boost of energy by switching to this cool, bluish white hue – similar to what you would get from a cup of coffee, without the caffeine!



USAI Clean

4000K

80% Dimming Intensity

Illuminate every corner of a space for a thorough cleaning with bright, cool light.



USAI Energize

4900K

70% Dimming Intensity

This cool white light setting is designed to maximize visual acuity and improve concentration. It's perfect for tasks that require attention and focus.

Scenes for Entertaining



USAI Entertain

2500K

50% Dimming Intensity

Warm light, bright enough to see guests yet dim enough to flatter faces and set a cozy, inviting mood.



USAI Dine

2300K

35% Dimming Intensity

Allow guests to appreciate beautifully plated food while engaging in conversation with a relaxed warm light.



Color Select & Circadian Lighting FAQs

Q: What is Circadian Lighting?

A: Light regulates many biological responses in people which are not associated with our sense of sight, including an 'internal clock' in our bodies that makes us alert during the day and sleepy at night. The daily changes in our physical, mental and behavioral states that respond to a light-and-dark cycle is commonly known as our circadian rhythm. When our biological cycles are synchronized with the solar day this is referred to as "entrainment". An entrained circadian system that is aligned with the natural light/dark cycle of the solar day – sleeping at night and waking up at sunrise, for example – results in better sleep, diet, mood, and hormonal functioning, whereas an unentrained system – jet lag, for example – results in the opposite.

Circadian Lighting is a specific set of values that scientists agree can help optimize

individuals' cycles with that of their surrounding environment, which is desirable for improved mood, health, longevity and wellbeing. For these reasons, nonvisual effects are what we want and need from our lighting today, and this can be done easily and simply with Color Select. Daylight provides bright, blue-rich light in the early morning to deliver an alerting signal as we wake up, while warm, low-level light in the early evening provides a cue to our bodies for a period of rest. We can replicate this natural light cycle with USAI's Color Select, to give ourselves the best chance of feeling good from day to day. We can now create personalized lighting to mitigate circadian disruption, optimize mood and visual experience, and improve our sense of wellbeing, in better ways than ever before.

Q: Do I need tunable white light to achieve circadian lighting?

A: One of the most important features of natural daylight is its dynamic range from bright to dark. Even if there were no color shift during the course of a day, our bodies would be getting the circadian stimulation they need from natural daylight through changes in light level alone – so, tunable white light color change is not required to achieve circadian lighting. However, what scientists have found is that it is very unusual for interior spaces to achieve the high levels of light required for optimal circadian stimulation, and by shifting the spectrum of the light, we can give the light a circadian "boost". Additional tools and metrics can be used to quantify the circadian effectiveness of any given light source. New lighting metrics, such as circadian light (CLA), circadian stimulus (CS), melanopic lux and others have emerged to guide lighting designers evaluate how well they are lighting interior spaces for the circadian system.



Q: Why would I use warm versus cool color temperatures?

A: If the goal is to achieve a certain circadian stimulus for daytime lighting, cooler color temperatures can give a circadian "boost" to a specific lighting installation – even if the light levels do not change. As a result of the way these new circadian metrics work, blue light is given more weight in terms of its impact on the circadian system than the longer red wavelengths.

If it's not possible to increase the wattage on a project, it may be enough simply to shift the color temperature for a few hours in the mornings. Additionally, in a daylight space, cool color temperatures provide a closer match to natural daylight outside the windows and can help create a more seamless outdoors-to-indoors architectural experience, while warm color temperatures in the same space may appear muddy.

By comparison, in late afternoon those same cool color temperatures can feel jarring and out of sync with what's happening in the surrounding area and a warmer color temperature may be more appropriate. Finishes can also play a role in this choice: metallic and stone interiors may shine in cool color temperatures, while wood and leathers may reveal undertones in warm color temperatures. It can come down to a matter of preference.

Q: How do I use Color Select in my project?

A: Implementing Color Select tunable white in an architectural space is easy. Simply specify the lighting layout as you would with any other white light product, and then ensure that on the controls side, two zones of dimming control are provided for each zone of light fixtures. One will be used for the intensity dimming channel, and the other will be used for the color tunability.

Additionally, if you wish the lighting color and intensity to change automatically throughout the course of the day, then include an astronomical time clock with the controls system of your choice. The controls commissioning agent can help set the scenes for the time set points of your choice.

Alternatively, static scenes can be stored as presets in your architectural dimming control system should you choose that option.

If the goal is to achieve a circadian effective lighting layout, then special calculations will need to be made to ensure adequate circadian light is being achieved within the space. **Contact your local USAI Lighting sales representative for assistance with circadian lighting specifications for your project.**











Q: What USAI products should I use?

A: Anything you like! USAI offers Color Select in recessed form factors from 3" apertures for smaller scale buildings all the way to 6" for high volume spaces, and pendants and surface mounted fixtures in a variety of sizes and form factors to satisfy practically every ceiling type imaginable. See a variety of USAI product options listed on pages 11 – 12.



A Guide to USAI® LED Color Choices

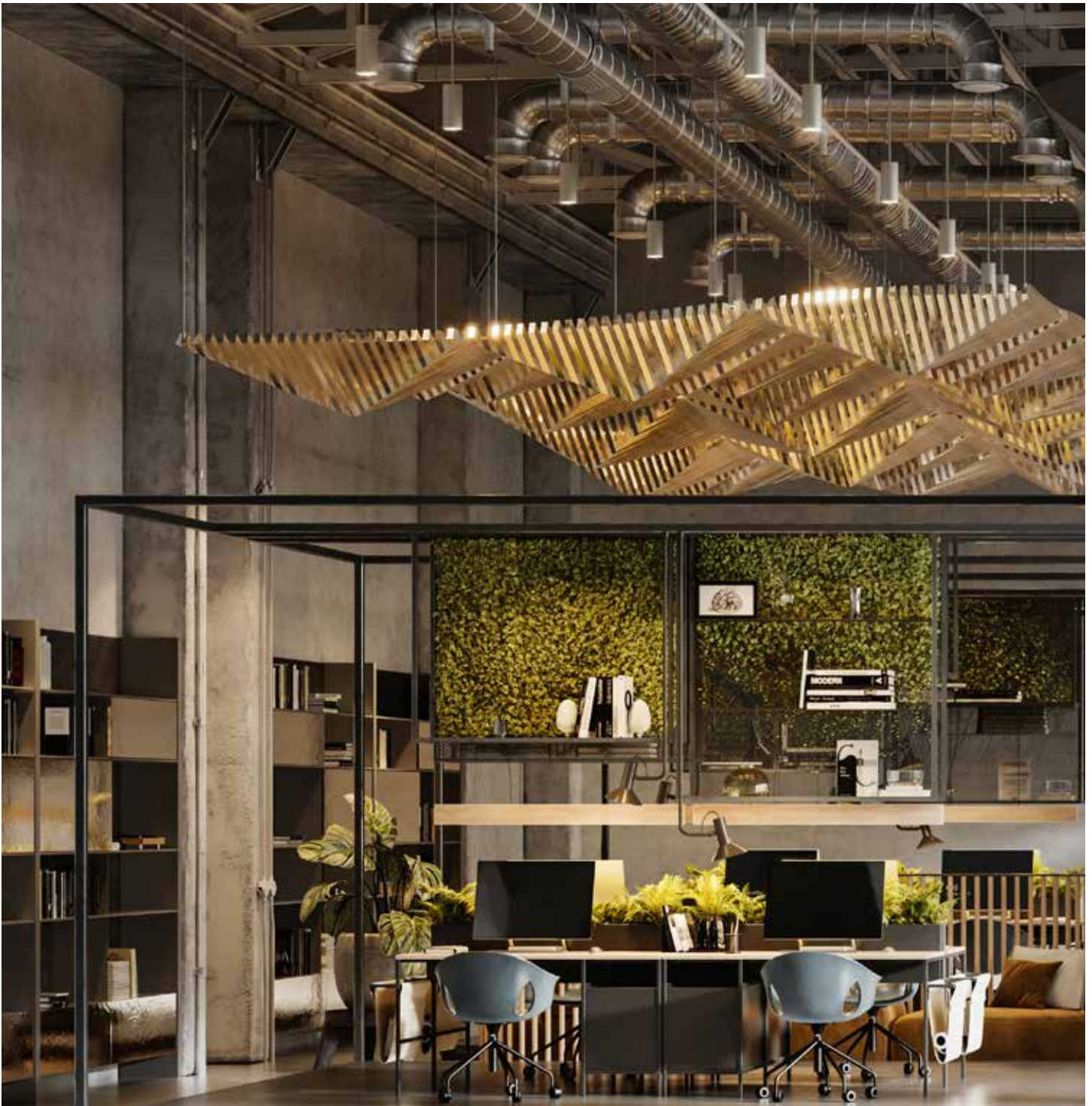
What's Right for You?

<p>USAI LED COLOR CHOICES</p>	 <p>Classic White®</p>  <p>Project: New York Investment Firm, Lighting Designer: SBLD Studio, Architect: Studios Architecture Photograph: @Bilyana Dimitrova</p>	 <p>Dim-to-Warm</p>  <p>Project: Hotel Room Concept</p>	 <p>Warm Glow® Dimming</p>  <p>Project: FMC Tower at Cira Centre South Lighting Designer: CBBLD Architect: Pelli Clarke Pelli, BLT Architects Photograph: © Jeff Goldberg / Esto</p>	 <p>Color Select® Tunable White</p>  <p>Project: Hamptons House Interior Designer: KA Design Group Photograph: Greg Barrett</p>	 <p>Infinite Color+®</p>  <p>Project: Seminole Hard Rock Hotel & Casino Lighting Designer: Focus Lighting Architect: Rockwell Group Photograph: Miami in Focus</p>
<p>Tier 1 \$ \$ \$ Budget Friendly Tier 2 \$ \$ \$ Lots to Love Tier 3 \$ \$ \$ Ultimate</p>	<p>TIER 1, 2, 3</p>	<p>TIER 1, 2</p>	<p>TIER 3</p>	<p>TIER 3</p>	<p>TIER 3</p>
<p>EXPERIENCE</p>	<p>Color Consistency and Premium Performance</p>	<p>Traditional Warmth in an LED</p>	<p>Uncompromised, Patented, Traditional Warmth in an LED</p>	<p>Daily Light Cycle Mimicking Outdoor Natural Light</p>	<p>Full Spectrum of Colors from Personalized Whites to Saturated</p>
<p>CLIENT REQUIREMENTS</p>	<p>Clients looking for beautiful consistent and static LED lights with smooth dimming.</p>	<p>Projects on a budget with the desire for a similar warmth to traditional light sources (halogens and incandescent).</p>	<p>Option for specifiers who adore traditional light sources (halogens and incandescent) and want the same warmth and dimming experience with their LED.</p>	<p>A desire to bring the outdoor light cycle inside for well being benefits and personalized environments.</p>	<p>Spaces that require the ultimate in dynamic lighting with the greatest flexibility – from bespoke experiences, to perfectly matched layers of light from other fixtures.</p>



LEARN MORE
about LED Color
at USAI.

Color Select® Tunable White



Front and Back Cover: BeveLED Mini® Cylinder.

USAI[®]
Lighting

CALL, EMAIL, OR VISIT USAILIGHTING.COM TO LEARN MORE

USAI LIGHTING COLLABORATORY
13 Crosby Street
New York, NY 10013
845-234-4090
showroom@usailighting.com

USAI LIGHTING HEADQUARTERS
1126 River Road
New Windsor, NY 12553
T: 845-565-8500
info@usailighting.com

©2022 USAI Lighting All Rights Reserved.
USAI, BeveLED, BeveLED Mini, TrueZero and TrueZero360™, BeveLED Block, BeveLED Basic, Primary, Classic White, Warm Glow, Color Select and Infinite Color+ are registered trademarks and trademarks of USAI, LLC. All designs protected by copyright. Covered by US Patents. Patents pending. WoodWorks®, MetalWorks™ and TechZone® are trademarks of AWI licensing LLC. CA-036E