

Progress Report >

2012

The Committee's mission is to keep in touch with developments in the art and science of lighting throughout the world and prepare a yearly report of achievements for the Society. Acceptance in the Progress Report is based on an impartial judging process used by the committee to evaluate each submission on its uniqueness, innovation and significance to the lighting industry. There were 216 submittals in 2012; 130 were accepted into the report.

IES PROGRESS COMMITTEE

Kim Daley, LC
Chairperson

Mark Benguerel
Vice Chair
Finelite, Inc.

Bruce Belfer
The Belfer Group

Gregory Bennorth
Universal Lighting Technologies

Kristin Bernick
Diversified Lighting

Bill Busch
Committee Member

Robert Cilic
OSRAM Sylvania Inc.

Boyd Corbett
Maxlite

Leslie Davis, LC
Leslie Davis Lighting Design

Claudia Gabay-Jones
Committee Member

John Green, P.E., LC
Cooper Lighting

Andrea Hartranft, LC
C.M. Kling & Associates Inc

Peter Jacobson
Con Edison

Kandy Kernes
Lighting Science Group Corp.

Rick Leeds
Committee Member

Howard Lewis
Lighting Alternatives

Mark Lien, LC
Hubbell Lighting Inc

Eric Lind
Lutron Electronics Co., Inc.

Kathleen Packard, LC
Visa Lighting

Andrew Pultorak, LC
Lighting Design Lab

Edwin Rambusch
Rambusch Decorating Co.

Dyke Riffle
Riffle & Associates Inc

Vincent Roy, LC
Philips Lighting Co.

Shelli Sedlak, LC
GE Lighting

Anthony Serres
Committee Member

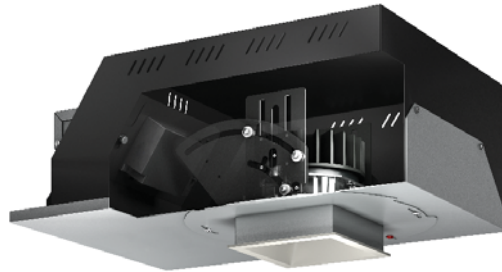
Sandra Stashik
Acuity Brands

Kenneth Walma
Cooper Controls

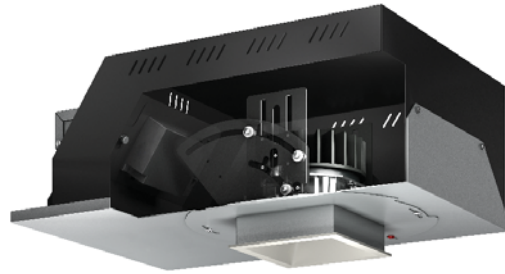
Jered Widmer
The Lighting Practice

Paula Ziegenbein
OSRAM Sylvania Inc.

Ardra Zinkon
TEC, Inc. Engineering and Design



USAI introduces: Warm Glow Dimming in their LED downlight luminaires. A proprietary LED module shifts color temperature as the luminaire is dimmed to match the color shift of an incandescent lamp from 2,700 to 2,200K. The light engine delivers up to 63 lumens per watt in either 82 or 90 plus CRI.



From **USAI** comes the BeveLED 2.0 Family. This complete family offers recessed downlight, adjustable and wall-wash options in three different light outputs up to 2,100 lumens. The fixture is available in four color temperatures up to 90 CRI and beam distributions of 30, 50, 80 deg.



The NanoLED NXT from **USAI Lighting** provides the first 2.5-in. LED fixture with a 10 deg optic and 8,725 center beam candle power. The fixture has four beam options in 10, 25, 35 and 50 deg and has three color temperature options of 2,700, 3,000, and 3,500K.