

Beauty and Brains

The best recommendations for lighting, speakers, smart home gadgets, and even outdoor grilling from the area's leading experts. BY ERIKA AYN FINCH



all aflow ↗

FOLLOW THE LIGHT

Finding yourself tired and reaching for more coffee at 2 p.m.? You might just have to adjust the lights. With new products from **USAI Lighting** uniquely linked to **Savant's** control technology and app, the brightness, color, and intensity of your home lighting can be set to follow your natural circadian rhythms—bright during that mid-afternoon lull, for example, and soft and relaxed in the evening as you start to wind down. Lights include recess, pendant, and mounted styles, and the easy-to-use app allows precise management of timers, dimming, and color adjustment. So, skip the coffee.

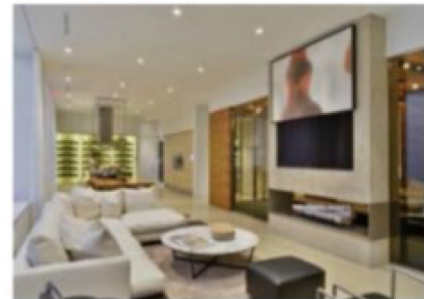
Systems Design & Integration, Needham, Mass. | sdboston.com



CATCH THE RHYTHM

If you are looking for concert-level sound outdoors from an unobtrusive source, **Coastal Source's 3-Way Ellipse Bollards** are the way to go. The sleek speakers are built to withstand harsh weather conditions and are (mostly) buried underground. They also work with Coastal Source's **Plug+Play** system, or they can be integrated into your home's existing system.

DC Home Systems, Portsmouth, N.H. | dchomesystems.com



let there be Netflix ↗

MOVE OVER, ART

Moving Art Lifts by **Leon** provide an elegant way to hide your TV. The silent lifts accommodate original art (use your own or browse Leon's gallery), mirrors, and even sculptures to conceal TVs up to seventy inches wide. You choose whether you want the art to move up and down, left to right, or split in the center. The best part? The tracks are hidden behind the artwork: No unattractive metal rails. *Systems Design & Integration*