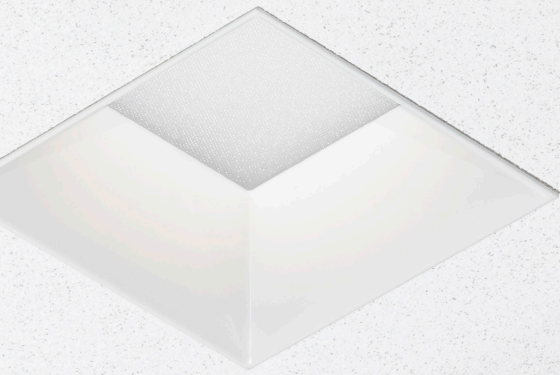


**USAI**<sup>®</sup>  
Lighting

+

**Armstrong**<sup>®</sup>  
CEILING SOLUTIONS



# Trimless Acoustical Lighting

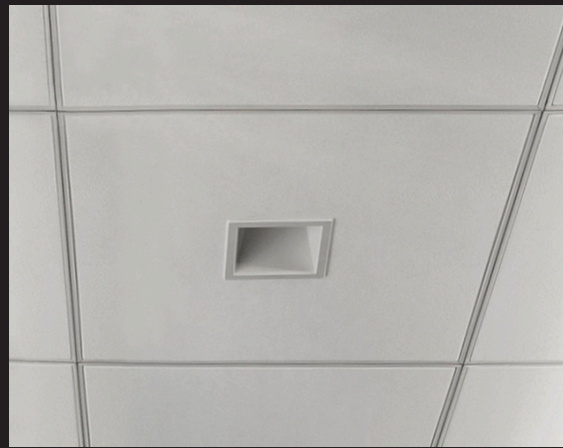
The look of drywall in acoustical ceiling panels

# Making the Impossible Possible

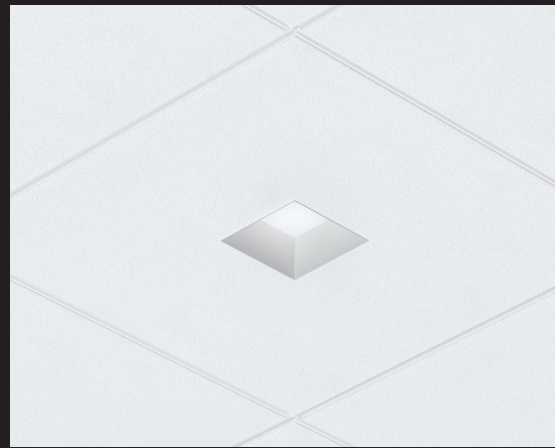
USAI Lighting and Armstrong® Ceiling Solutions collaborate to rethink ceilings and make the impossible possible with trimless lighting in acoustical ceiling panels. Armstrong Ceiling Solutions' precut ceiling panels are designed exclusively for perfect placement of USAI's recessed, LED light fixtures to create a consistently clean, trimless finish with a drywall appearance.

→ Traditionally, acoustical ceiling panels are manually cut and require trimmed recess fixtures to cover up jagged edges.

Armstrong's factory-prepared, center-cut panels paired with USAI's snap-in mounting system provide for perfect lighting and ceiling integration every time.



**TRADITIONAL OPTION**  
For Acoustical Ceiling Panels

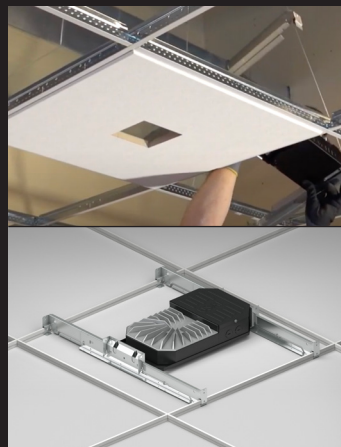


**NEW**  
Standardized Integrated Solutions

## Easy 3-Step Installation



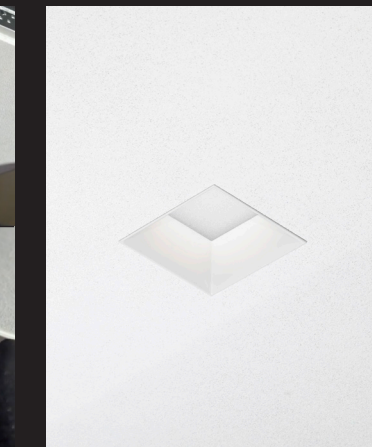
**1 Place Precut Panel Into Grid 1<sup>st</sup>**  
Cutting + Waste Eliminated



**2 Place Fixture with Snap-In Mounting System -**  
Seismically Rated  
Self Leveling + Centering

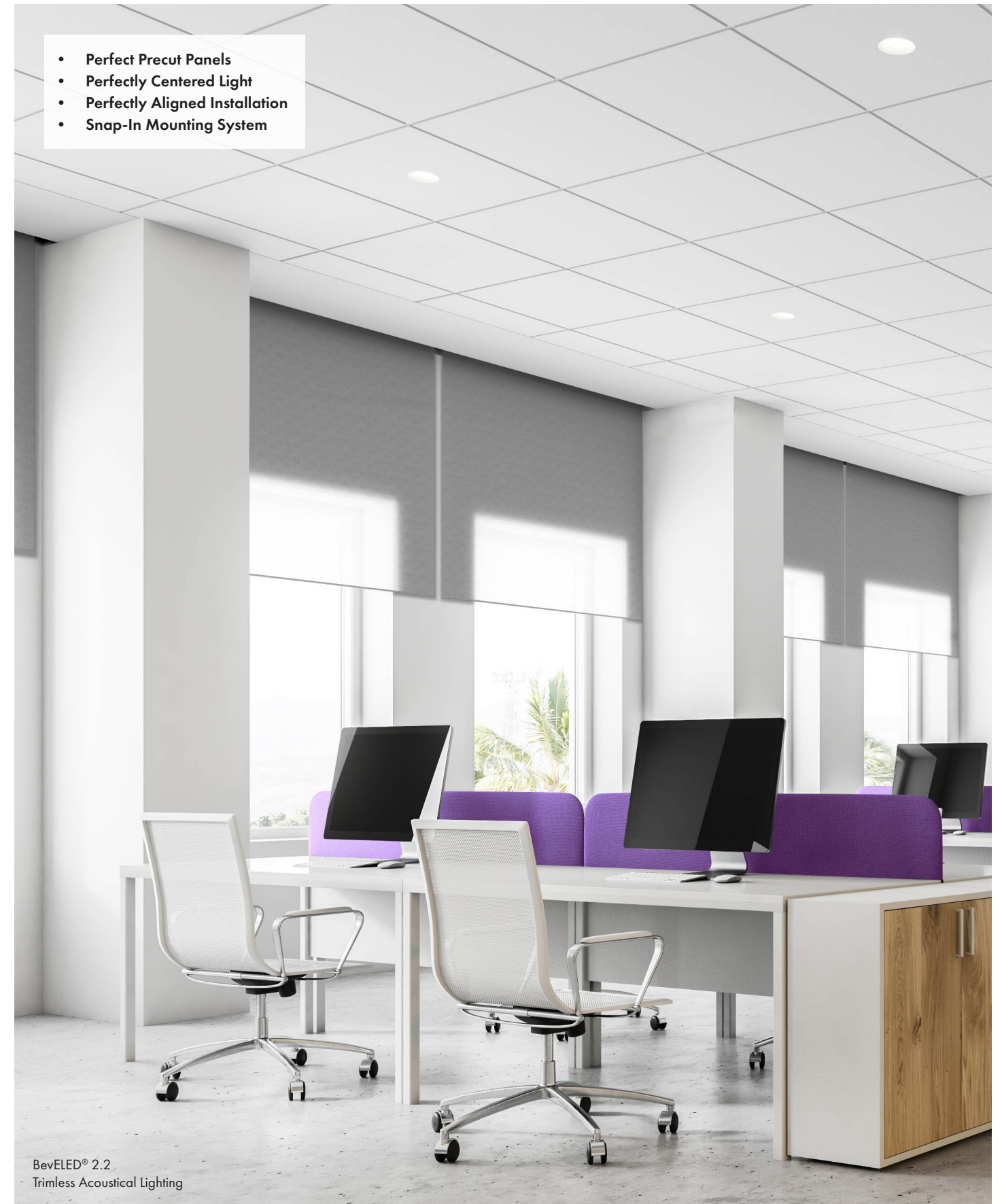


**3 Insert USAI's Trimless Acoustical Trim**



**= Perfect Fit Everytime**  
Flange Eliminated

- Perfect Precut Panels
- Perfectly Centered Light
- Perfectly Aligned Installation
- Snap-In Mounting System



BevELED® 2.2  
Trimless Acoustical Lighting

# Perfection Every Time

Engineered for precision and ease.

# Product Details

Trimless Acoustical Lighting and Center Cut Panels – A Solution for Every Budget



## USAI Product Tiers

TIER 1

TIER 2

TIER 3

All tiers share the same roomside appearance.

Specify from various product tiers across a project to meet budget requirements, while retaining a consistent aesthetic.



### FINISH OPTIONS

All finish options available for Complete product tier only.

- Armstrong Global White
- Armstrong Blizzard White
- Clear Matte Anodized
- Piano Gloss Black
- Conduit Silver
- Grey
- Black
- Bronze
- Anti-Microbial Finish
- CUSTOM



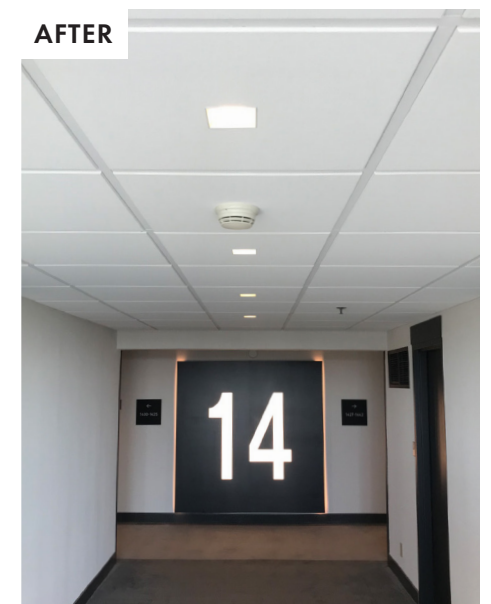
Refer to spec sheets online for more detailed product information.



Conference Room (Left) BeveLED Mini®  
Hallway (Center) BeveLED BLOCK®  
Open Office (Right) BeveLED Mini®  
Trimless Acoustical Lighting

## 15/16" Rapid Renovations

Elevate environments with Trimless Acoustical Lighting. Replace light fixtures and ceiling panels while using the building's existing 9/16" and 15/16" grids for quick and easy renovations.

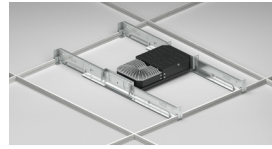


# USAI Housing Options for Trimless Acoustical Lighting

A Housing Solution for Every Project Challenge.

## BeveLED Mini COMPLETE

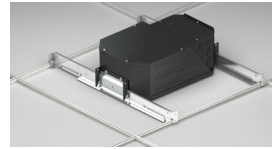
TIER 3



**FT** Our Flat Housings are the smallest housings available for recessed lighting installation in new ceiling construction projects.



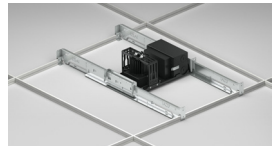
**FTA** With low profiles (5") Flat Adjustable Housings provide high-performance accent lighting within tall rooms and restrictive plenums.



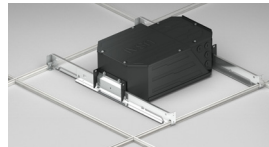
**NC & NCCP\*** New Construction Housings accommodate every type of light fixture.

## BeveLED Mini BASIC

TIER 2



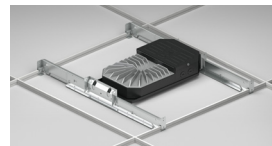
**EC** New Construction Housing for downlight and wallwash light functions.



**NC** New Construction (NC) Housings accommodates the adjustable light function.

## BeveLED 2.2 COMPLETE

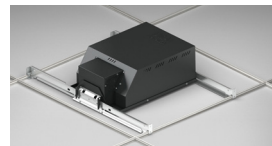
TIER 3



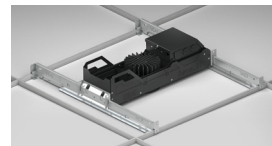
**FT** Our Flat Housings are the smallest housings available for recessed lighting installation in new ceiling construction projects.



**FTA** With low profiles (5") Flat Adjustable Housings provide high-performance accent lighting within tall rooms and restrictive plenums.



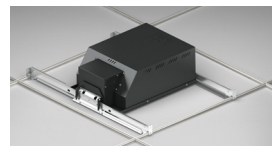
**NC & NCCP\*** New Construction Housings accommodate every type of light fixture.



**NCSM** Narrow Width Housing allows recessed lighting to fit in narrow spaces.

## BeveLED 2.2 BASIC

TIER 2



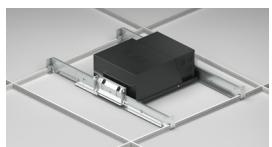
**NC & NCCP\*** New Construction Housings accommodate every type of light fixture.



**NCSM** Narrow Width Housing allows recessed lighting to fit in narrow spaces.

## BeveLED 2.2 PRIMARY

TIER 1



**NC** New Construction Housings are USAI's most affordable option.



Refer to spec sheets online for more detailed product information.

\*All NCCP housings are compliant to Chicago's building codes.



## Easy Ordering Process

Continue to order lighting from USAI and ceiling panels from Armstrong® Ceiling Solutions.

### STEP 1.

Choose Trimless Acoustical Light Fixture Size and Shape.

### STEP 2.

Choose Corresponding Acoustical Center Cut Ceiling Panel.



### Trimless Acoustical Light Fixtures

BeveLED Mini® Round 3"  
BeveLED Mini® Square 3"  
BeveLED 2.2 Round 4.5"  
BeveLED 2.2 Square 4.5"

### LED Color Technologies

- Classic White
- Warm Glow® Dimming
- Color Select® Tunable White

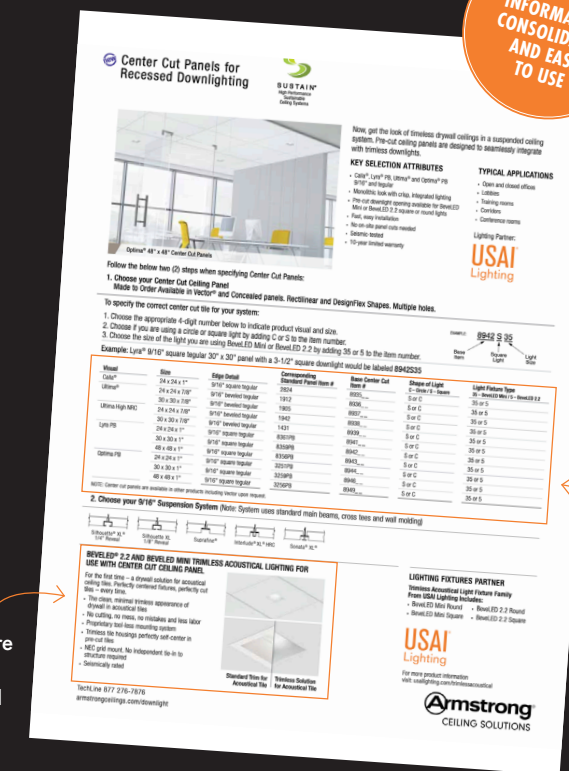


### Center Cut Panels

Calla® (2'X2')  
Lyra® PB (2'X2', 30"X30" & 4'X4')  
Optima® PB (2'X2', 30"X30" & 4'X4')  
Ultima® (2'X2' & 30"X30")  
Ultima® High NRC (2'X2' & 30"X30")  
Vector

### Compatible Grids

Silhouette®  
Suprafine®  
Interlude®



INFORMATION CONSOLIDATED AND EASY TO USE

Ceiling options from Armstrong

Light fixture options from USAI

For use only with USAI's Trimless Acoustical Product Family.

## Cost Savings

Save money and time when using USAI's Trimless Acoustical Lighting and Armstrong's Center Cut Panels.

- 1 Eliminates 1/3 fixture installation time by electrician
- 2 Eliminates cost for cutting holes
- 3 Eliminates the cost of wasted tiles – Est. 10% of cut tiles are thrown away
- 4 Precut tile from Armstrong at small upcharge to overall project
- 5 Light Fixture from USAI at small upcharge

**USAI**<sup>®</sup>  
Lighting



**Armstrong**<sup>®</sup>  
CEILING SOLUTIONS



# Committed to Perfection + Ease

BeveLED<sup>®</sup> 2.2 Trimless  
Acoustical Lighting

**USAI**<sup>®</sup>  
Lighting

**CALL, EMAIL, OR VISIT [USAILIGHTING.COM](http://USAILIGHTING.COM) TO LEARN MORE**

**USAI LIGHTING COLLABORATORY**

13 Crosby Street  
New York, NY 10013  
845-234-4090  
[showroom@usailighting.com](mailto:showroom@usailighting.com)

**USAI LIGHTING HEADQUARTERS**

1126 River Road  
New Windsor, NY 12553  
T: 845-565-8500  
[info@usailighting.com](mailto:info@usailighting.com)

©2021 USAI Lighting All rights reserved.  
USAI, BeveLED, BeveLED Mini, Classic White,  
Warm Glow, and Color Select are registered  
trademarks of USAI, LLC. All designs protected  
by copyright. Covered by US Patents. Patents  
pending. Armstrong<sup>®</sup> and the Armstrong logo are  
trademarks of AWI Licensing LLC.  
CA-090B